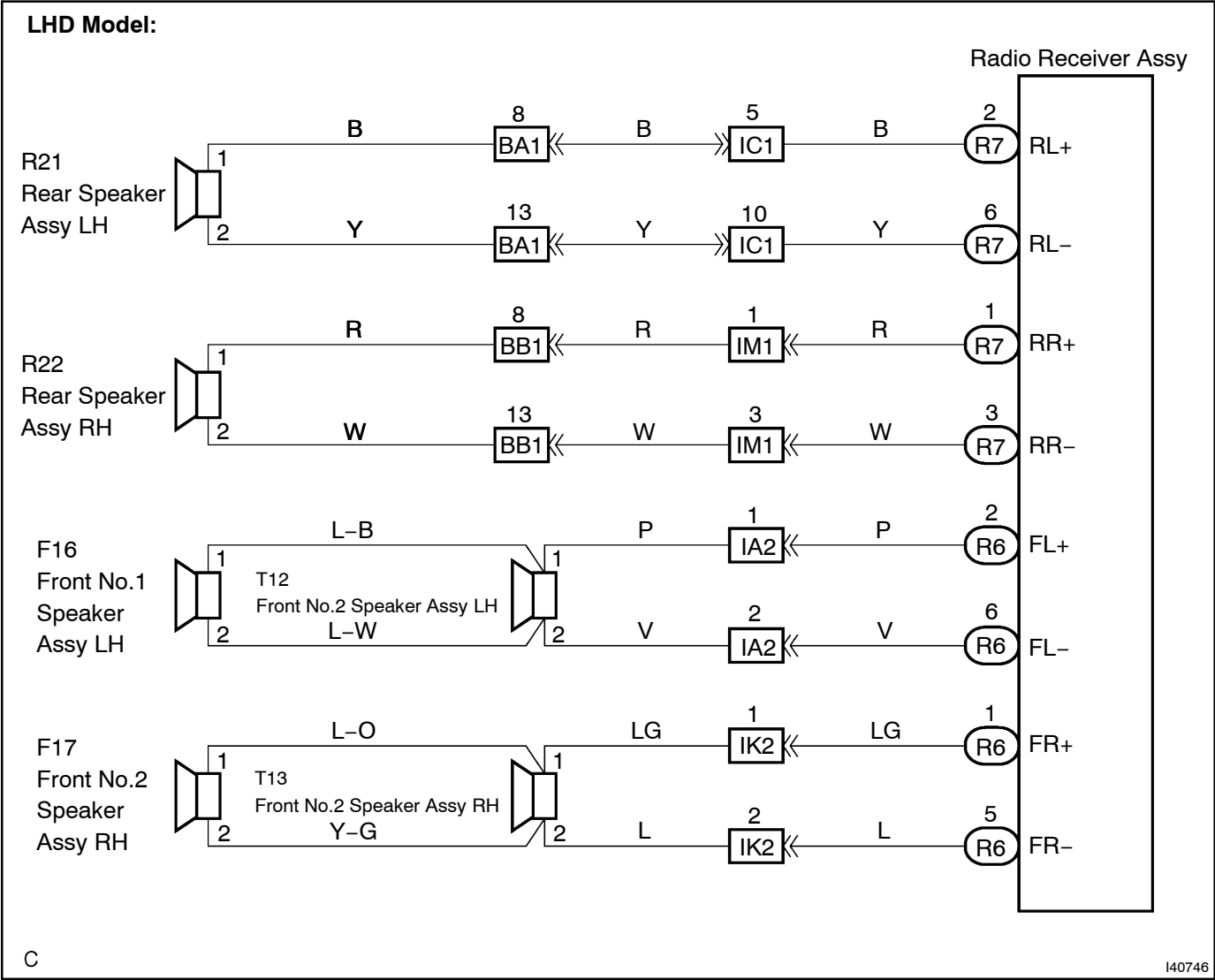


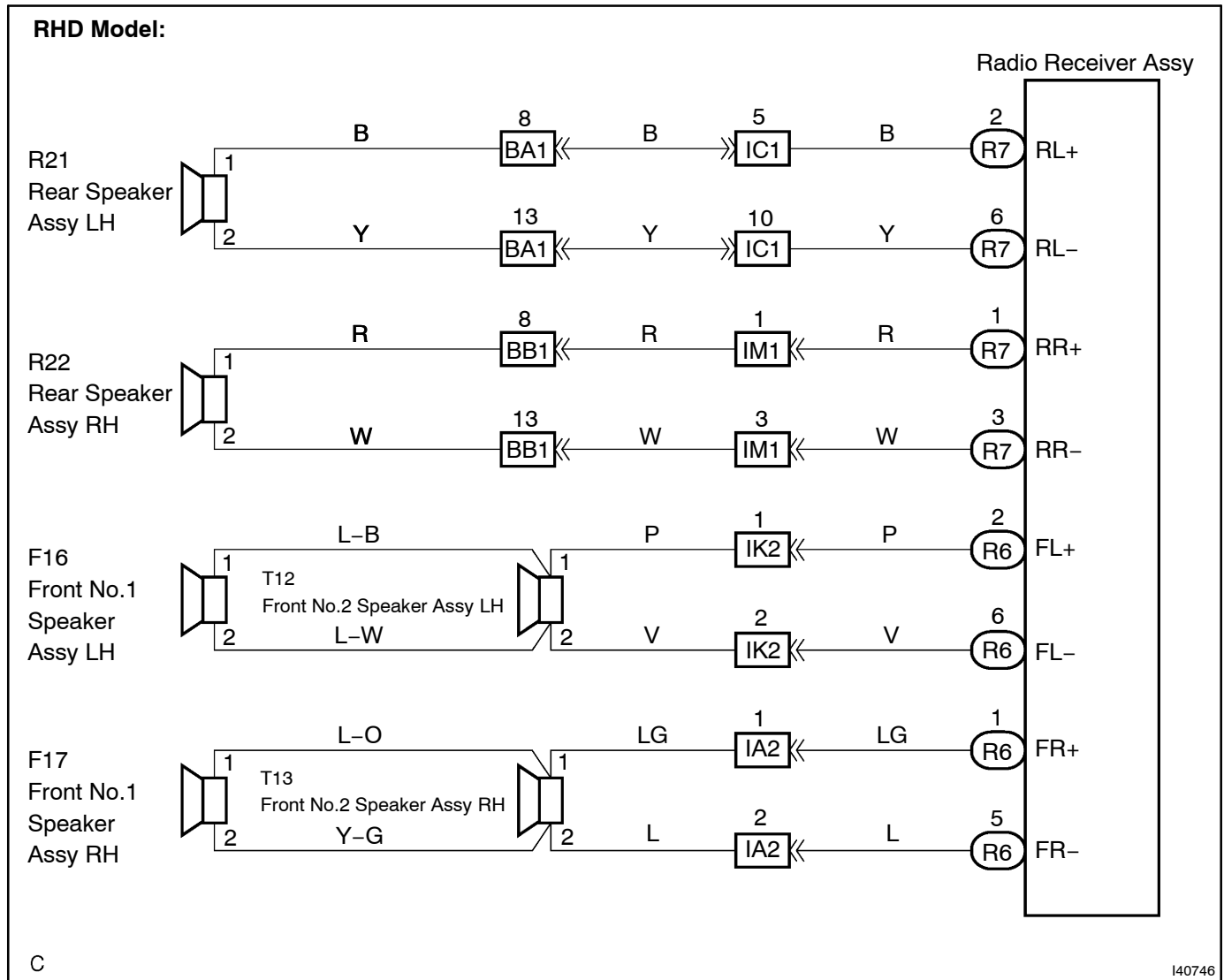
SPEAKER CIRCUIT

CIRCUIT DESCRIPTION

A sound signal is sent from the radio receiver assy to the speakers via this circuit.

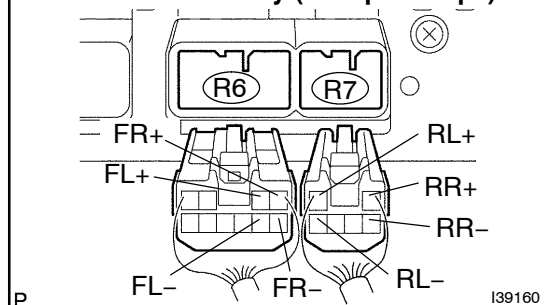
WIRING DIAGRAM





INSPECTION PROCEDURE

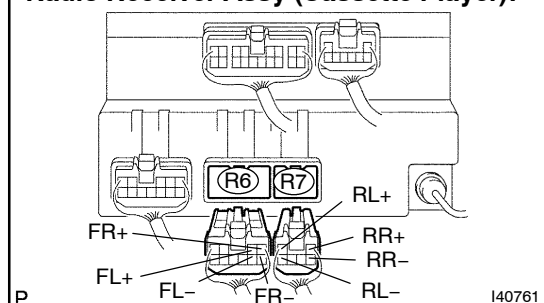
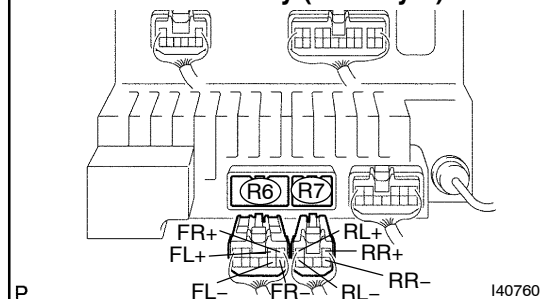
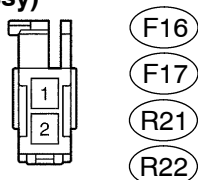
1	CHECK HARNESS AND CONNECTOR(RADIO RECEIVER ASSY - SPEAKER ASSY)
---	--

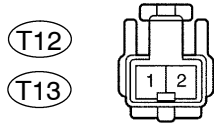
Radio Receiver Assy (Except Europe):

- (a) Disconnect the connectors from the radio receiver assy and speakers.
- (b) Measure the resistance according to the value(s) in the table below.

Standard:

Tester connection	Specified condition
FL+ - 1 (Front No.1 speaker assy LH)	Below 1 Ω
FL- - 2 (Front No.1 speaker assy LH)	Below 1 Ω
FR+ - 1 (Front No.1 speaker assy RH)	Below 1 Ω
FR- - 2 (Front No.1 speaker assy RH)	Below 1 Ω
FL+ - 1 (Front No.2 speaker assy LH)	Below 1 Ω
FL- - 2 (Front No.2 speaker assy LH)	Below 1 Ω
FR+ - 1 (Front No.2 speaker assy RH)	Below 1 Ω
FR- - 2 (Front No.2 speaker assy RH)	Below 1 Ω
RL+ - 1 (Rear speaker assy LH)	Below 1 Ω
RL- - 2 (Rear speaker assy LH)	Below 1 Ω
RR+ - 1 (Rear speaker assy RH)	Below 1 Ω
RR- - 2 (Rear speaker assy RH)	Below 1 Ω
FL+ - Body ground	10 k Ω or higher
FL- - Body ground	10 k Ω or higher
FR+ - Body ground	10 k Ω or higher
FR- - Body ground	10 k Ω or higher
RL+ - Body ground	10 k Ω or higher
RL- - Body ground	10 k Ω or higher
RR+ - Body ground	10 k Ω or higher
RR- - Body ground	10 k Ω or higher

Radio Receiver Assy (Cassette Player):**Radio Receiver Assy (CD Player):**
Wire Harness Side:
(Front No.1 Speaker Assy)
(Rear Speaker Assy)


**Wire Harness Side:
(Front No.2 Speaker Assy)**

I38664

NG**REPAIR OR REPLACE HARNESS OR CONNECTOR****OK****2 INSPECT FRONT NO. 1 SPEAKER ASSY**

(a) Resistance check.

(1) Measure the resistance between the terminals of the speaker.

NOTICE:**The speaker should not be removed for checking.****Standard: 4 Ω** **NG****REPLACE FRONT NO. 1 SPEAKER ASSY
(SEE PUB. NO. RM864E, PAGE 67-4)****OK****3 INSPECT FRONT NO. 2 SPEAKER ASSY**

(a) Check that malfunction disappears when another speaker in good condition is installed.

OK: Malfunction disappears.**HINT:**

- Connect all the connectors to the speakers.
- When there is a possibility that either right or left front speaker is defective, inspect by interchanging the right one and the left one.

OK**REPLACE FRONT NO. 2 SPEAKER ASSY
(SEE PUB. NO. RM864E, PAGE 67-5)****NG**

4 INSPECT REAR SPEAKER ASSY

- (a) Resistance check.
(1) Measure the resistance between the terminals of the speaker.

NOTICE:
The speaker should not be removed for checking.
Standard: 4Ω

NG

REPLACE REAR SPEAKER ASSY
(SEE PUB. NO. RM864E, PAGE 67-6)

OK

PROCEED TO NEXT CIRCUIT INSPECTION SHOWN IN PROBLEM SYMPTOMS TABLE
(SEE PAGE 05-1024)